

LIGHTHOUSE FARM

NEWSLETTER

April 2026 | Issue No.2



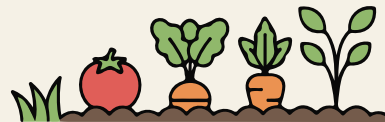
A MESSAGE FROM THE FARM

April is a season of renewal and growth! As everything begins to bloom, we're reminded of the beauty of fresh starts and the strength of our community. This month, we're excited to open our greenhouse, expand opportunities, and continue growing together. With warmer days ahead, there's so much to look forward to as we plant, build, and connect.

HEALTH AND WELLNESS TIP

Spring Into Health: Plant a Little Garden

Spring is the perfect time to start a small garden, whether it's flowers, herbs, or veggies! Gardening is more than fun, it's a natural stress reliever, gets you moving, and even supports mental health by boosting mood and focus. Tip: Start with easy-to-grow herbs like basil or mint; snipping fresh leaves for meals gives you a tasty boost of nutrients and a daily dose of nature.



IN THE COMMUNITY

We're excited to share a new addition to our community—a blessing box now located by our greenhouse at Lighthouse Farm. This special resource was thoughtfully built by Charlie Charles and his students at Rowan County High School, and we're so grateful for their time, craftsmanship, and generosity in creating something so meaningful that truly gives back.

The blessing box is here for anyone in need or anyone wanting to give—take what you need, leave what you can. It's a simple but powerful way to support one another and reflects the spirit of kindness, community, and connection we strive to grow every day.



SPONSOR SHOUTOUT: Northern Kentucky Cedar

We want to give a big thank you to Northern Kentucky Cedar for supporting our farmers here at Lighthouse Farm. NKC provides opportunities for our farmers to gain hands-on experience, build valuable life skills, and contribute to real projects while earning income. Their generosity and mentorship help our farmers grow in confidence and independence every day.

We truly appreciate their partnership and support, and we encourage everyone to check out the beautiful handcrafted pieces made by NKC and our farmers—quality products made with care and purpose! Learn more at www.northernkycedar.com

UPCOMING EVENTS

It's Greenhouse Season!

- April 25th - Greenhouse Opening Day at Lighthouse Farm
 - April 28th - Glamping at The Edge
 - April 30th - May 2nd - Tollesboro Trade Days festival
-

FARMER SPOTLIGHT: Trevor Shotwell



This month we're excited to shine the spotlight on **Trevor Shotwell!** Trevor has been a valued part of the Lighthouse community since 2021. He lives in Maysville and comes from a close-knit family with two younger sisters and an older brother. Born on December 21, Trevor brings a fun and thoughtful energy to everything he does.

At Lighthouse, Trevor especially enjoys working in the pantry and greenhouse—his favorite place to be is with his hands in the dirt, helping things grow. Whether he's planting, organizing, or lending a hand wherever needed, Trevor takes pride in his work. Outside of Lighthouse, he loves electronics and spending time with friends, especially playing Yahtzee. We're so grateful to have Trevor as part of our Lighthouse family—his dedication and positive attitude make a difference every day.

GET INVOLVED: Support us while you shop!

Link your Kroger Plus Card to Lighthouse Farm and a portion of your spending is donated to us at **NO extra cost to you!**

1. Open the Kroger App or visit Kroger.com
2. Tap the three lines (≡) in the top corner
3. Select Rewards → Community Rewards
4. Search code **QE597** or “Lighthouse Farm”
5. Tap Select or Add to finish

Thank you for being a guiding light for our community!

LOOKING AHEAD

This month at Lighthouse Farm, we have lots of exciting events and opportunities for our community to learn, grow, and have fun!

- **Greenhouse Opening Day – April 25th:** Join us for light refreshments and activities as we officially open the greenhouse for the season. It’s a great chance to explore, get hands-on, and celebrate the start of spring growth.
- **Tollesboro Trade Days - April 30th - May 2nd:** We’ll be collecting donations ahead of the event and selling items—along with our spring flowers—to raise funds for our new fitness center building. Your support helps us continue to grow programs that empower our community.
- **Glamping at The Edge – April 28th:** Our farmers and friends will have the opportunity to check out The Edge at Cave Run Lake before its grand opening on May 1st. It’s a fun, one-day adventure to enjoy nature and connect with each other.
- **Track & Field Practice:** Our athletes are gearing up for the Special Olympics with weekly training sessions to build strength, skills, and teamwork.

We’re looking forward to another month of learning, growing, and sharing new experiences together. There’s always something happening at Lighthouse Farm, and we can’t wait to see everyone joining in the fun!

FOLLOW US



facebook.com/LighthouseFarm
[@LighthouseFarm](https://www.instagram.com/LighthouseFarm)
www.lighthousefarm.org



LIGHTHOUSE FARM

JOHN 1:9